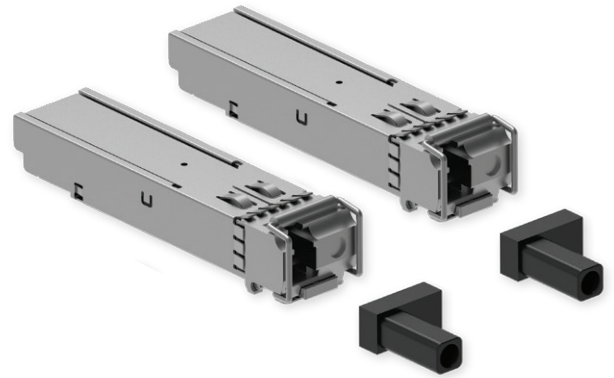


1.25 Gb/s 20 KM BIDI SFP TRANSCEIVER



TECHNICAL DATA

GENERAL

DS-IAE-SFP-G B20X-L1.25G BIDI SFP135H-ECE3

Connector	Simplex LC
Supported media	Single-mode fiber
Data rate	1.25 Gb/s
Max. power consumption	< 0.8 W
Cable distance	Up to 20 km reach over G.652 SMF
Operating humidity	5 to 85 %
TX wavelength	1310 nm
RX wavelength	1550 nm
Temperature range	-40°C ~ +85°C
Case	Fully metallic enclosure for low EMI and excellent ESD protection
RoHS	✓
REACH	✓

DS-IAE-SFP-G B20X-L1.25G BIDI SFP155H-ELE1

Connector	Simplex LC
Supported media	Single-mode fiber
Data rate	1.25 Gb/s
Max. power consumption	< 0.8 W
Cable distance	Up to 20 km reach over G.652 SMF
Operating humidity	5 to 85 %
TX wavelength	1550 nm
RX wavelength	1310 nm
Temperature range	-40°C ~ +85°C
Case	Fully metallic enclosure for low EMI and excellent ESD protection
RoHS	✓
REACH	✓

