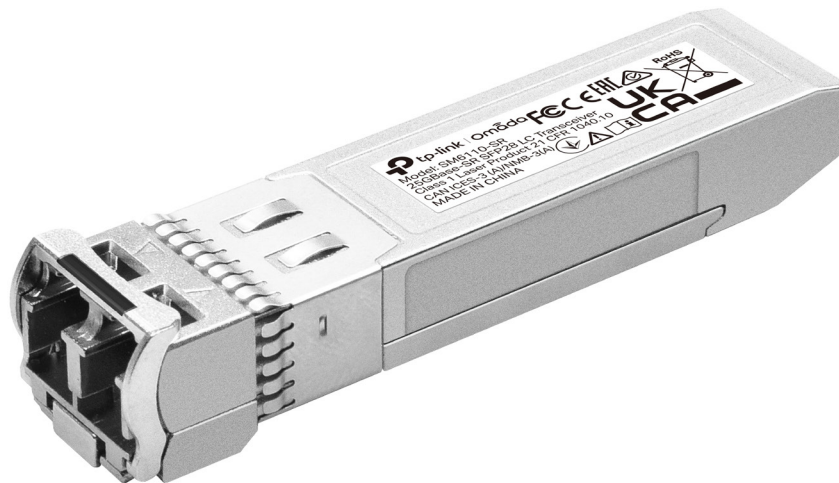




Omada 25GBase-SR SFP28 LC Transceiver Datasheet

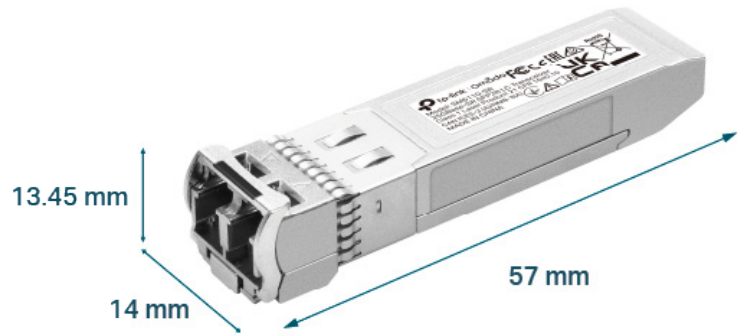
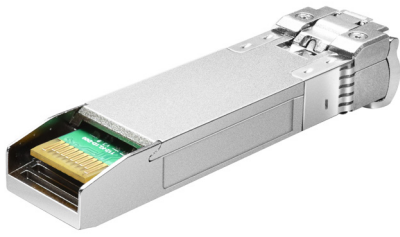
MODEL: SM6110-SR



Highlights

- 10G/25GBASE-SR multi-mode SFP28 LC Transceiver
- Hot-Pluggable with maximum flexibility
- Supports Digital Diagnostic Monitoring (DDM)
- Low Power Consumption no more than 1 W
- Compatible with 10G/25G Small Form Pluggable Multi-Source Agreement (SFP28 MSA)
- Compatible with switches with 25G ports like SX6632YF; and 10G ports like SG3428X and SG3452X

Product Pictures



Specifications

Model		SM6110-SR
General Specifications	Form Factor	SFP28
	Support Data Rate	Dual Rate 25.78 Gbps and 10.31 Gbps
	Wavelength	850 nm
	Max. Cable Length	100 m @OM4 / 70 m @ OM3 at 25.78 Gbps; 300 m @OM3 at 10.31 Gbps
	Connector	Duplex LC/UPC
	SFP28 MSA	Yes
	Media	MMF (Multimode fiber)
	Core Size	50/125 μ m
	Transmitter Type	VCSEL
	Receiver Type	PIN
	Transmitter Power	-8.4 to 2.4dBm @25.78Gbps; -7.3 to -1dBm @10.31Gbps
	Receiver Sensitivity	< -10.3 dBm @25.78Gbps; < -11.1 dBm @10.31Gbps
	Receiver Overload	> 2.4 dBm @25.78Gbps; > 0.5 dBm @10.31Gbps
Extinction Ratio	> 2 dB @25.78Gbps; > 3 dB @10.31Gbps	

Model		SM6110-SR
General Specifications	Power Supply	3.3 V
	Power Consumption	≤ 1 W
	CDR (Clock and Data Recovery)	Built-in CDR
	DDM	Yes
	Standards and Protocols	<ul style="list-style-type: none"> • IEEE 802.3by, IEEE 802.3ae • SFF-8402, SFF-8472, SFF-8432, SFF-8431 • eCPRI, CPRI • TCP/IP
	Packaging Technology	COB Packaging
	Hot Swappable	Yes
	Regulatory Compliance	CE, FCC, RoHS
Environmental & Physical Specifications	Operating Temperature	0°C to 70°C (32°F to 158°F)
	Storage Temperature	-40°C to 85°C (-40°F to 185°F)
	Operating Humidity	10% to 90% RH Non-condensing
	Storage Humidity	5% to 90% RH Non-condensing