



# AC1200 Dual Band Wi-Fi Router

Four Antennas for Faster AC  
Wi-Fi and Greater Coverage



Archer C50



Dual-Band Wi-Fi  
867 Mbps + 300 Mbps<sup>†</sup>



Router/ Access Point / Range  
Extender Multiple Modes



4 × 5dBi  
Antennas

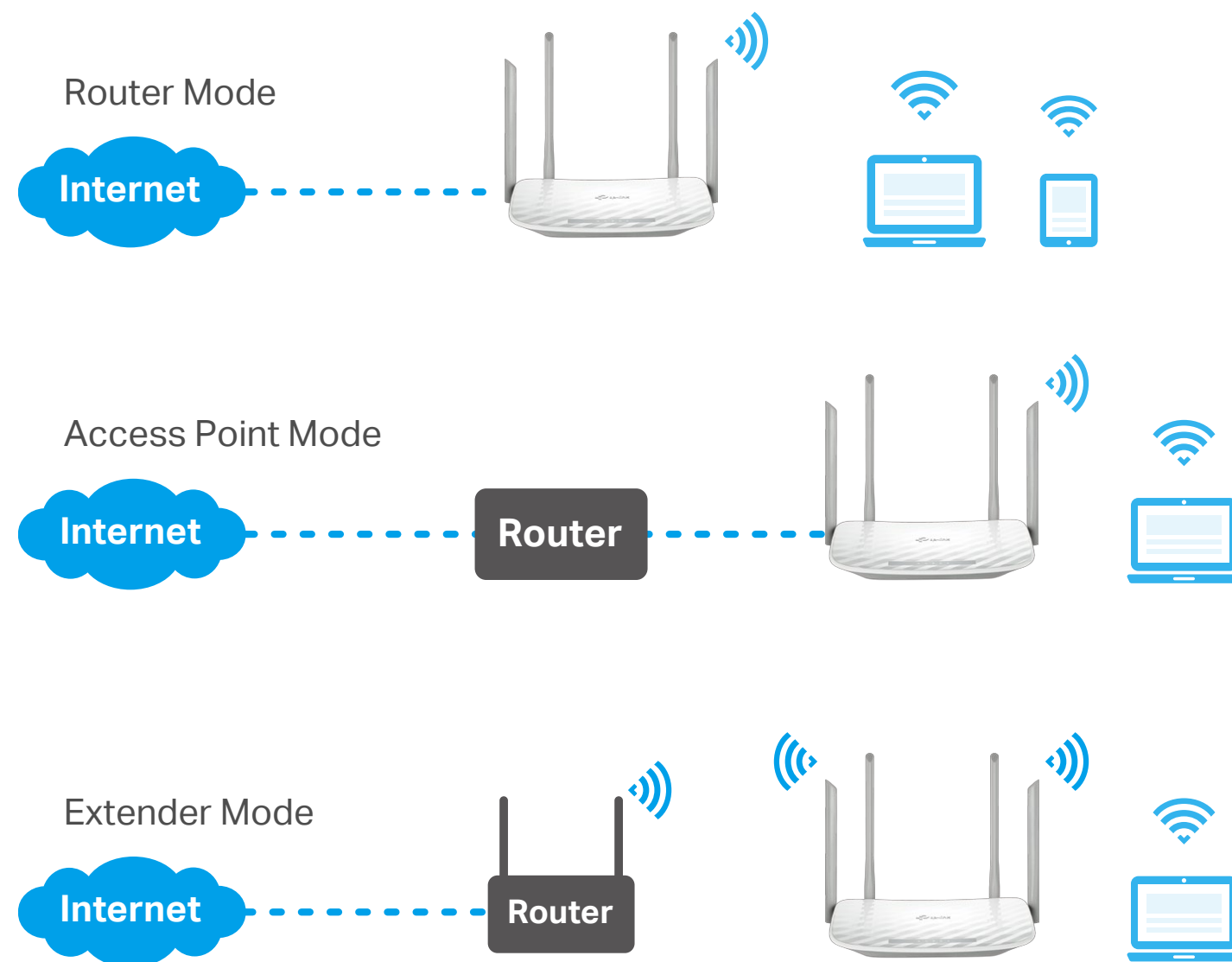


Faster Wi-Fi  
with MU-MIMO<sup>†</sup>

# Highlights

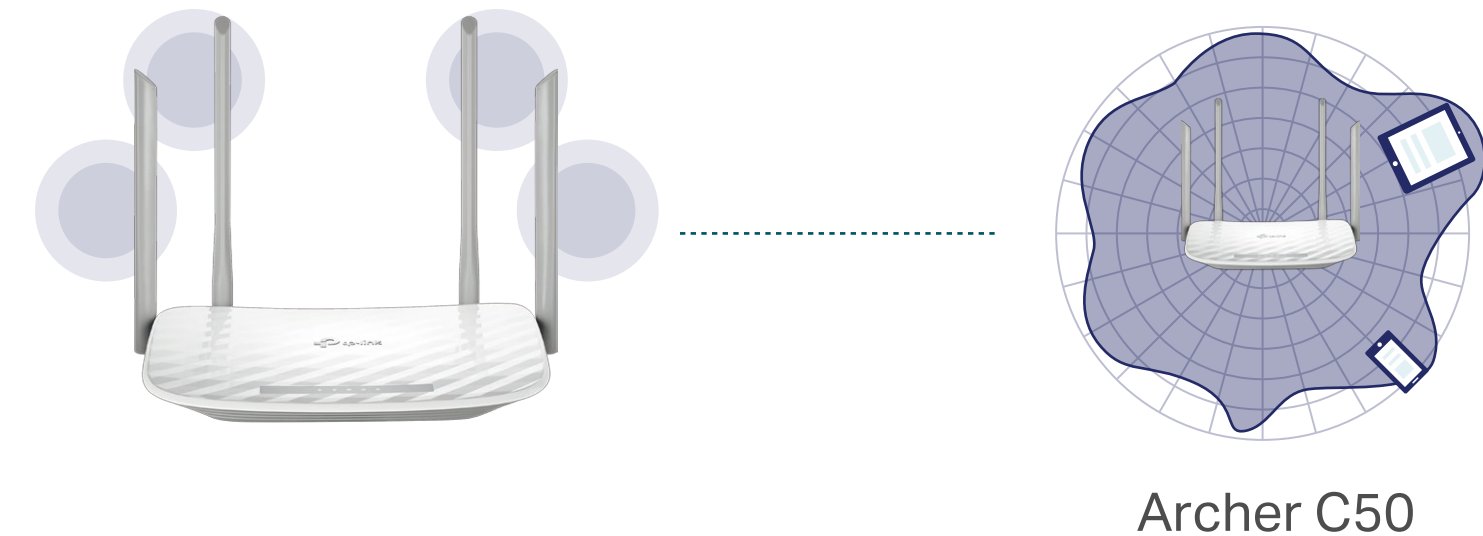
## Multi-Mode Function

In addition to serving as a wireless router, this router can also function as a wireless access point or range extender, providing you with the flexibility you need in any situation. The mode can be easily setup in the web management page or Tether App.



## 4 Antennas & Beamforming for Maximum Coverage

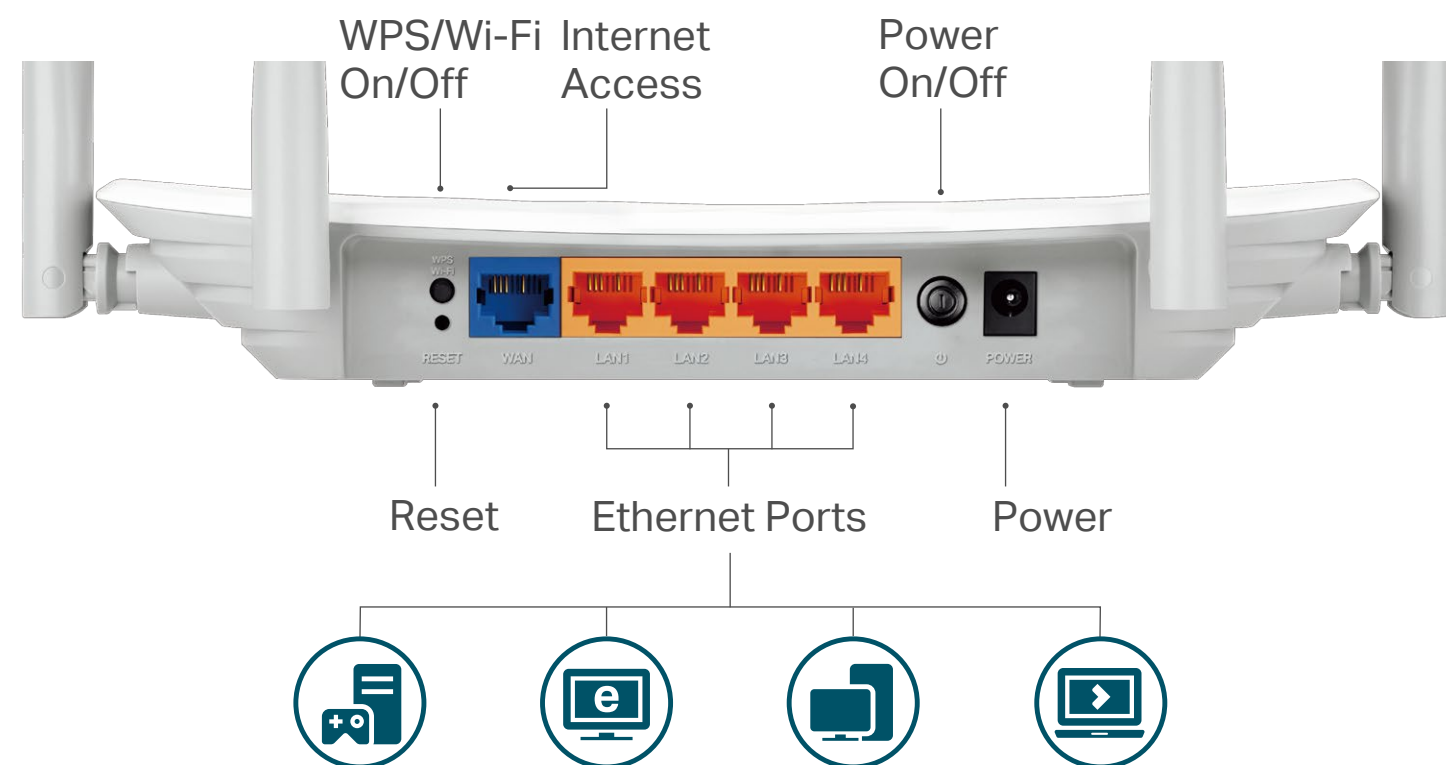
Equipped with four external antennas, Archer C50 creates stronger and more reliable networks for all to enjoy in your home. Beamforming technology concentrates the Wi-Fi signal towards your connected devices, providing better Wi-Fi range and network performance.



# Highlights

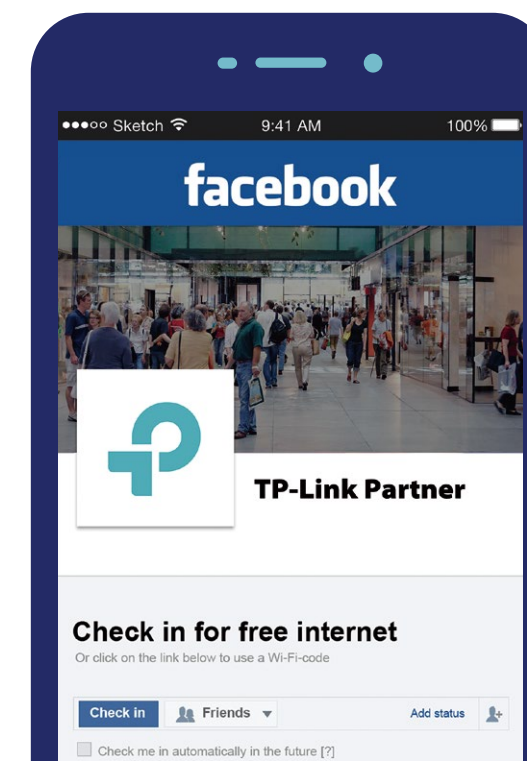
## Fast Ethernet

Enjoy fast, reliable wired connections for gaming and streaming in the best quality.



## Facebook Wi-Fi: Efficient Guest Authentication

Captive portal presents devices with a convenient, user-friendly authentication method to grant Wi-Fi access. Easily share your facebook account to anyone who connects to your network.

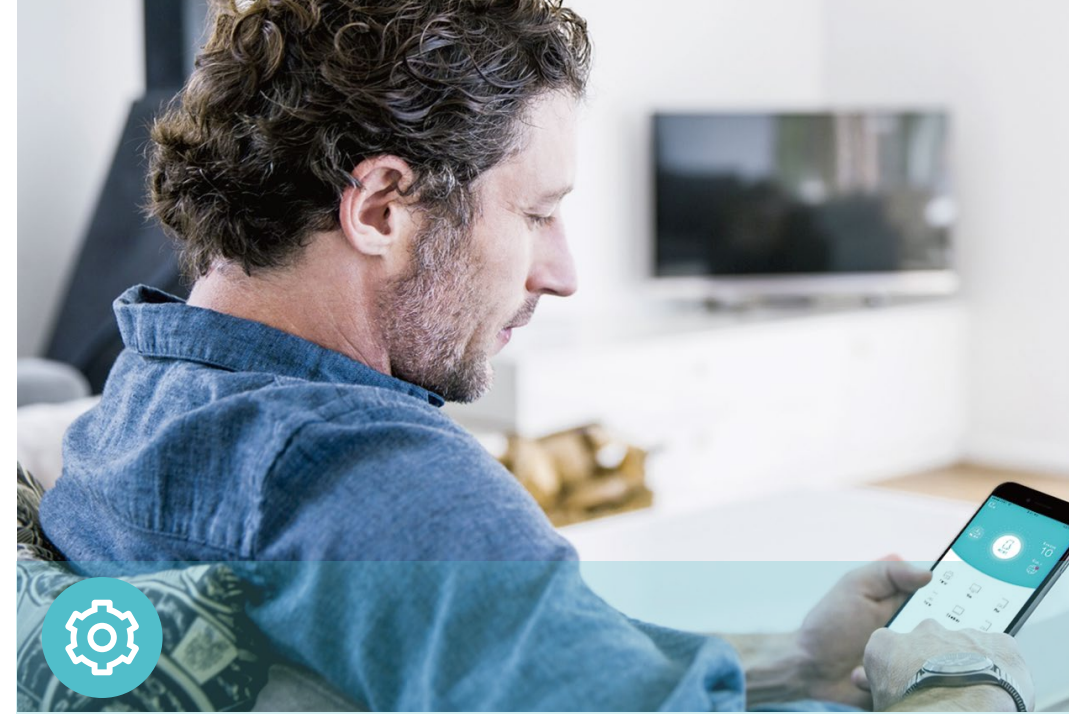


# Features



## Reliability

- Ultimate Wireless Speed – 300 Mbps Wi-Fi speed on 2.4 GHz and 867 Mbps Wi-Fi speed on 5 GHz meet your daily internet needs
- MU-MIMO – Simultaneously transfers data to multiple devices
- Bandwidth Control – Assign your preferred devices with more bandwidth
- IPTV – Support IGMP Proxy/Snooping, Bridge and Tag VLAN to optimize IPTV streaming



## Ease of Use

- Intuitive Web UI – Ensure quick and simple installation without hassle
- Fast Encryption – Make secure wireless connection quickly and easily with the push of a WPS button
- Hassle-free Management with Tether App – Let you manage your network settings with your smartphone
- Facebook Wi-Fi – Provide efficient guest authentication and share your Facebook page to anyone who connects to your Wi-Fi.



## Security

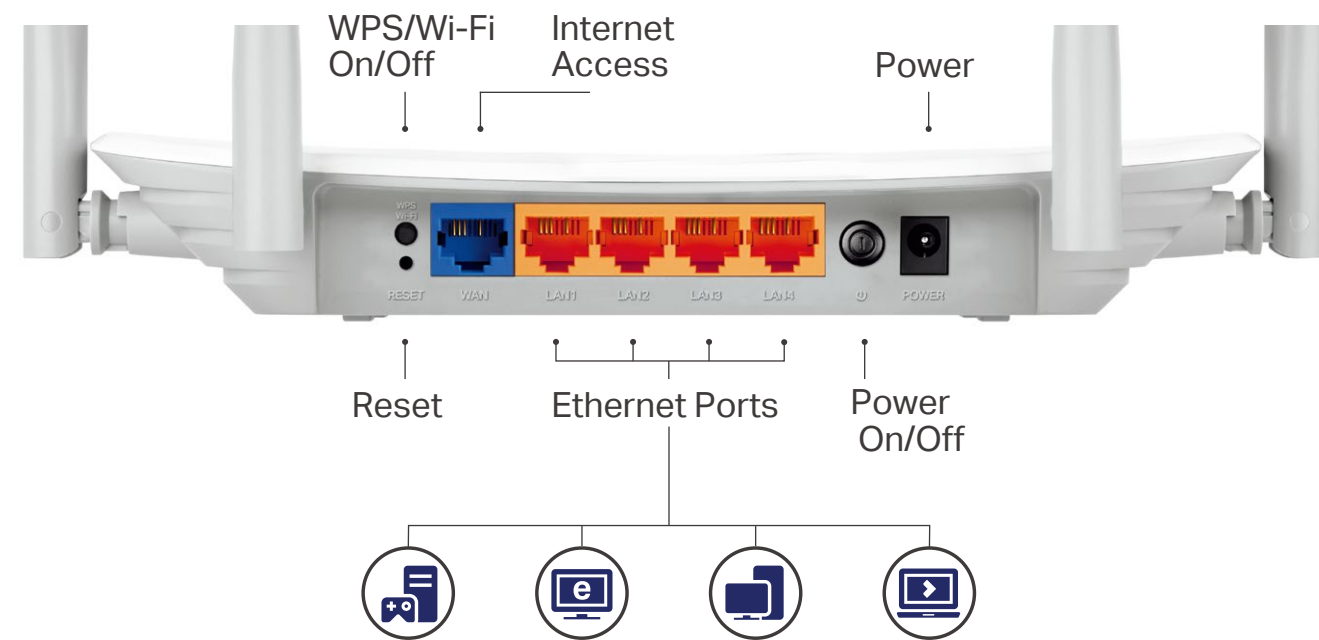
- Active Defense – WPA-PSK/WPA2- PSK encryptions provide active protection against security threats
- Guest Network – Provide separate access for guests while securing the home network
- Access Control – Establish a whitelist or blacklist to allow or block certain devices from accessing the internet
- Parental Controls – Manage when and how connected devices can access the internet



# Specifications

## Hardware

- Ethernet Ports: 4\*10/100 Mbps LAN Ports, 1\*10/100 Mbps WAN Port
- Buttons: Reset Button, Power On/Off Button, WPS/Wi-Fi On/Off Button
- Antennas: 4 Fixed Omni Directional Antennas
- External Power Supply: 9VDC/0.85A
- Dimensions (W x D x H): 9.1 x 5.7 x 1.4 in. (230 x 144 x 35 mm)



## Wireless

- Wireless Standards: IEEE 802.11ac/n/a 5 GHz, IEEE 802.11b/g/n 2.4 GHz
- Frequency: 2.4 GHz and 5 GHz
- Signal Rate:
  - 5 GHz: Up to 867 Mbps
  - 2.4 GHz: Up to 300 Mbps
- Reception Sensitivity:
  - 5 G:
    - 11a 54M:-77dBm;
    - 11ac VHT20 MCS8:-72 dBm;
    - 11ac VHT40 MCS9:-68 dBm;
    - 11ac VHT80 MCS9:-63 dBm;
  - 2.4 G:
    - 11g 54M:-76 dBm;
    - 11n HT20 MCS7:-74 dBm;
    - 11n HT40 MCS7:-71 dBm;
- Wireless Function: Enable/Disable Wireless Radio, WMM, Wireless Schedule, Wireless Statistics
- Wireless Security: 64/128-bit WEP,WPA / WPA2,WPA-PSK / WPA2-PSK encryption

# Specifications

## Software

- WAN Type: Dynamic IP, Static IP, PPPoE, IPTV, PPTP (Dual Access), L2TP (Dual Access), Bigpond
- DHCP: Server, DHCP Client List, Address Reservation
- Quality of Service: WMM, Bandwidth Control
- Port Forwarding: Virtual Server, Port Triggering, UPnP, DMZ
- Dynamic DNS: DynDns, NO-IP, Comexe
- Access Control: Parental Controls, Local Management Control, Host List, White List, Black List
- Firewall Security: DoS, SPI Firewall, IP Address Filter/MAC Address Filter, IP and MAC Address Binding
- Protocols: IPv4, IPv6
- Management: Access Control, Local Management, Remote Management
- Guest Network: 2.4 GHz Guest Network, 5 GHz Guest Network, Facebook Wi-Fi

## Others

- Certification  
CE, RoHS
- System Requirements  
Microsoft Windows 10/8.1/8/7/Vista/XP/2000/NT/98SE, MAC OS, NetWare, UNIX or Linux  
Internet Explorer 11, Firefox 12.0, Chrome 20.0, Safari 4.0, or other Java-enabled browser  
Cable or DSL Modem  
Subscription with an internet service provider (for internet access)
- Environment  
Operating Temperature: 0°C~40°C (32°F ~104°F)  
Operating Humidity: 10%~90% non-condensing
- Package Contents  
Wireless Router Archer C50  
Power Adapter  
RJ45 Ethernet Cable  
Quick Installation Guide



For more information, please visit

<http://www.tp-link.com/en/products/details/Archer-C50.html>

or scan the QR code left

Specifications are subject to change without notice. TP-Link is a registered trademark of TP-Link Technologies Co., Ltd. Other brands and product names are trademarks or registered trademarks of their respective holders. No part of the specifications may be reproduced in any form or by any means or used to make any derivative such as translation, transformation, or adaptation without permission from TP-Link Technologies Co., Ltd. Copyright ©2020 TP-Link Technologies Co., Ltd. All rights reserved.

\*Maximum wireless signal rates are the physical rates derived from IEEE Standard 802.11 specifications. Actual wireless data throughput and wireless coverage are not guaranteed and will vary as a result of network conditions, client limitations, and environmental factors, including building materials, obstacles, volume and density of traffic, and client location.

†Use of MU-MIMO requires clients to also support MU-MIMO.

[www.tp-link.com](http://www.tp-link.com)

TP-Link AC1200 Dual Band Wi-Fi Router Archer C50