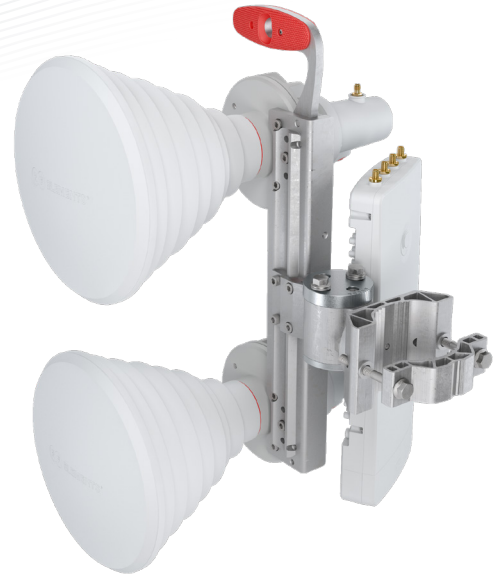


# Twin Horn Bracket

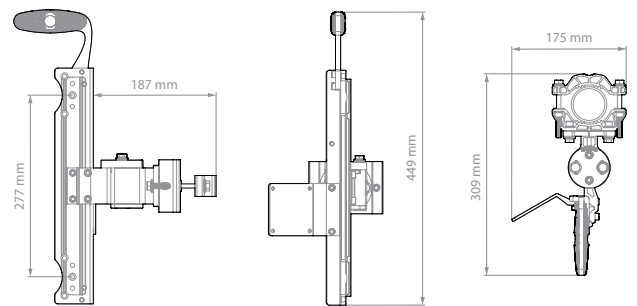
Twin Horn Bracket allows you to install two Symmetrical Horn antennas with exactly the same alignment. The bracket also accommodates mainstream 4x4 radios, such as ePMP™ 3000 or Mimosa® A5c. High density sectors or 4x4 deployments are now ingeniously simple.



## TECHNICAL DATA

Materials	Aluminium and Zinc Alloy, Stainless Steel UV stabilized and weather resistant ABS plastic
Environmental	IP55
Pole Mounting Diameter	40-80mm (recommend as close to 80mm as possible)
Temperature	-40°C to +60°C (-40°F to +140°F)
Wind Survival	160 km/h
Mechanical Adjustment	± 20° Elevation, ± 20° Azimuth
Weight	2.2 kg / 4.8 lbs – single unit* 2.5 kg / 5.5 lbs – single unit incl. package* 27 kg / 59.5 lbs – carton (10 units)*
Single Unit	Retail Box: 387 x 145 x 98 mm / 15.2 x 5.7 x 3.8 inch*
10 Units	Carton Box: 392 x 150 x 990 mm / 15.4 x 5.9 x 38.9 inch*

## PRODUCT DIMENSIONS

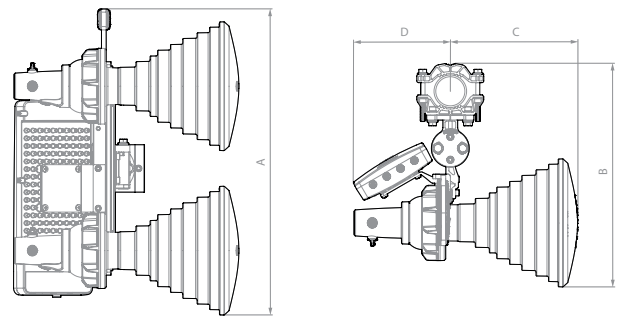


## COMPATIBLE WIRELESS PLATFORMS

RF elements®	any Symmetrical Horn TP Antennas Gen2 with TPA-SMA, any Symmetrical Horn CC Antennas Gen2
Cambium Networks™	ePMP™ 3000
Mimosa® Networks	A5c

## PACKAGE CONTENTS

- Twin Horn Bracket
- Pole Mounting Bracket
- Hex Key 5mm



Dimensions (mm / inch)	A	B	C
THB with HG3-TP-S30 and HG3-TP-S40	517 / 20.3	379 / 14.9	164 / 6.4
THB with HG3-TP-S50 to HG3-TP-S90	483 / 19.0	346 / 13.6	96 / 3.8
Dimensions (mm / inch)	D		
THB with ePMP™ 3000	164 / 6.4		
THB with A5c	172 / 6.7		

\*Subject to change

Twin Horn Bracket Rev OCT-2019

RF elements® is trademark of RF elements s.r.o., Humenne, Slovakia.  
All rights of respective trademark owner reserved.  
© RF elements 2019