



Grandstream Networks, Inc.

GWN76xx Wi-Fi Access Points

GWN7670WM – Quick Installation Guide

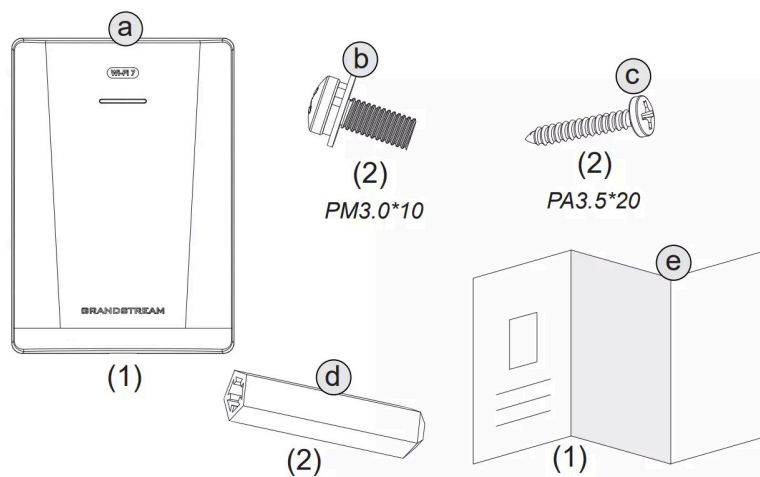


Overview

The GWN7670WM is a new generation enterprise-grade in-wall Wi-Fi 7 access point, ideal for small-to-medium-sized businesses to build next-generation Wi-Fi networks. It has a stylish appearance and a sprayable shell, which easily matches various decoration styles and perfectly integrates into the space. It offers dual-band 2×2:2 MU-MIMO with DL/UL OFDMA technology and a sophisticated antenna design for maximum network throughput and expanded Wi-Fi coverage range. With 4096 QAM modulation, Wi-Fi 7 achieves a significant increase in data transfer rates. MLO technology optimizes spectrum resource utilization to ensure a smooth experience for every user. To ensure easy installation and management, the GWN7670WM uses a controller-less distributed network management design in which the controller is embedded within the product's Web user interface. The GWN7670WM is also supported by GDMS Networking and GWN Manager, Grandstream's cloud and on-premise Wi-Fi management platform. It is the ideal Wi-Fi AP for voice-over-Wi-Fi deployments and offers a seamless connection with Grandstream's Wi-Fi capable IP phones. With support for advanced QoS, low-latency real-time applications, mesh networks, captive portals, BT location with BLE 5.3, 256 concurrent clients per AP and 1 x 2.5 Gigabit network ports with PoE+, GWN7670WM is an ideal Wi-Fi access point for medium wireless network deployments with medium-to-high user density.

Package Contents

The GWN7670WM package includes the following components:



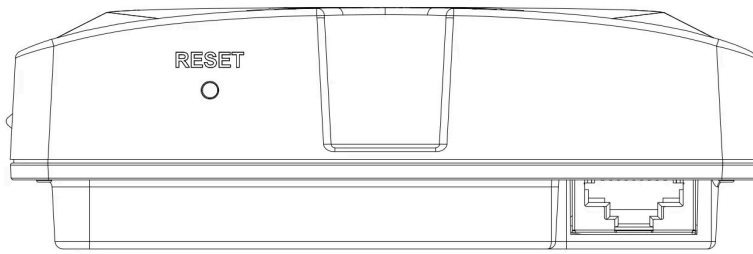
GWN7670WM package contents

Label	Quantity	Item
a	1×	GWN7670WM Main Unit
b	2×	Screws (PM3.0×10)
c	2×	Screws (PA3.5×20)
d	2×	Expansion Screws
e	1×	Quick Installation Guide + Regulatory Information

GWN7670WM package contents

GWN7670WM Ports

The GWN7670WM includes the following physical interfaces:



GWN7670WM Ports

Port	Description
NET/2.5G (PoE+)	Ethernet RJ45 port (2.5 Gbps) supporting PoE/PoE+.
RESET	Factory reset pinhole. Press for 7 seconds to reset factory default settings.

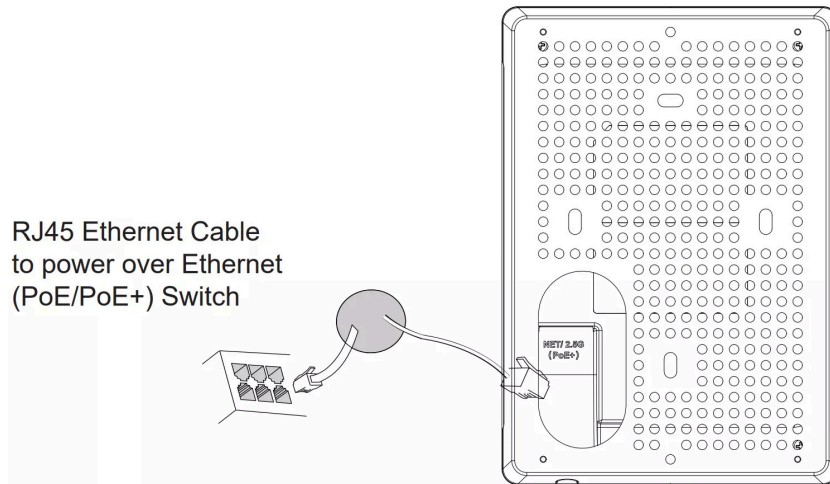
GWN7670WM Port Descriptions

Powering and Connecting the GWN7670WM

The GWN7670WM is powered using a PoE or PoE+ switch. Follow these steps to connect the device:

Step 1: Plug an Ethernet cable into the 2.5G PoE port on the back of the GWN7670WM.

Step 2: Connect the other end of the cable to a PoE/PoE+ switch that provides power and network access.

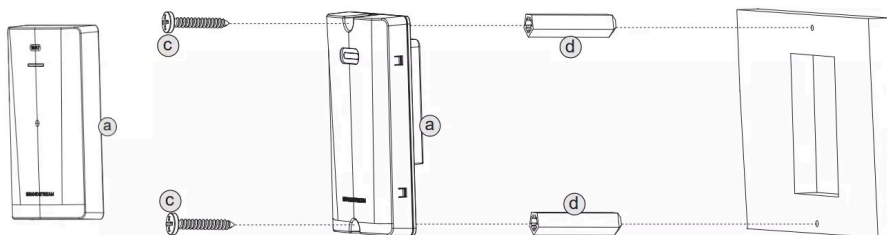


Powering and connecting the GWN7670WM

Hardware Installation

The GWN7670WM can be installed on the wall using one of two methods:

Embedded Wall Installation (Rear Shell Not Required)

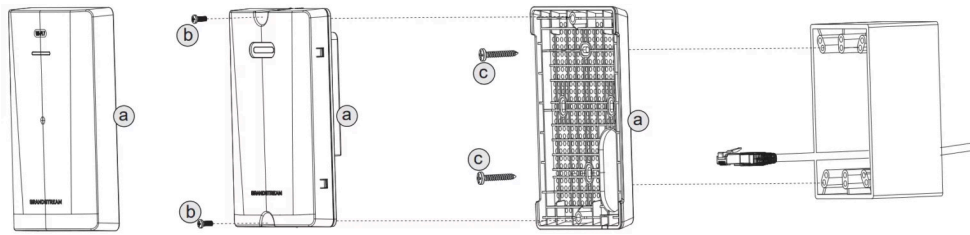


Wall Mount

1. Use a measuring tape to measure the distance between the two wall mount slots on the back of the GWN7670WM access point. Mark the screw hole positions on the wall with a pencil.

2. Drill the holes in the marked spots and secure the GWN7670WM to the wall using expansion screws.
3. Attach the front cover to complete the installation.

Wall or Electrical Box Installation (Rear Shell Required)



Wall Installation

1. Use a measuring tape to measure the distance between the two wall mount slots on the back of the GWN7670WM rear shell, and mark the mounting screw holes on the wall with a pencil.
2. Drill holes at the marked positions, then secure the GWN7670WM rear shell to the wall or electrical box using expansion screws.
3. Use screws to mount the GWN7670WM main body onto the rear shell.
4. Attach the front cover to the GWN7670WM body to complete the installation.

Connect to GWN7670WM Default Wi-Fi Network

GWN7670WM can be used as a standalone access point out of the box, or after a factory reset with Wi-Fi enabled by default.

After powering the GWN7670WM and connecting it to the network, GWN7670WM will broadcast a default SSID based on its MAC address GWN[MAC's last 6 digits], and a random password.

GWN7670WM's default SSID and password information are printed on the MAC tag of the unit.



MAC Tag

Accessing the configuration Interface

A computer connected to the GWN7670WM's SSID, or to the same network as the GWN7670WM can discover and access its configuration interface using one of the below methods:

Method 1: Discover GWN7670WM using its MAC Address

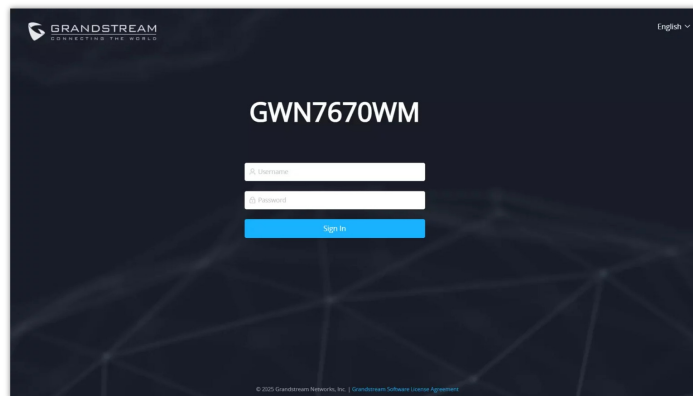
1. Locate the MAC address on the MAC tag of the unit, which is on the underside of the device, or on the package.
2. From a computer connected to the same network as the GWN7670WM, type in the following address using GWN7670WM's MAC address on your browser: **https://gwn_<mac>.local**

Example:

If a GWN7670WM has the MAC address EC:74:D7:8C:4D:F8, this unit can be accessed by typing https://gwn_ec74d78c4df8.local on the browser.

Method 2: Discover GWN7670WM using GWN Discovery Tool

1. Download and install GWN Discovery Tool from the following link:
<https://www.grandstream.com/tools/GWNDiscoveryTool.zip>
2. Open the GWN DiscoveryTool, and click on Scan.
3. The tool will discover all GWN76XX Access Points connected on the network showing their MAC and IP addresses.
4. Click on Manage Device to be redirected directly to the GWN7670WM's configuration interface, or type in manually the displayed IP address on your browser.
5. Enter username and password to log in. (The default administrator username is "admin" and the default random password can be found at the sticker on the GWN7670WM).



GWN7670WM login page

- Make sure that the GWN7670WM is not already paired with another GWN76xx Access Point as slave, GWN Router, GCC device or GDMS Networking Cloud, otherwise the configuration interface cannot be accessed.
- If the GWN7670WM is already paired, make sure to unpair it first, then do a factory reset.
- It is the customer's responsibility to ensure compliance with local regulations for frequency bands, transmit power, and others.
- To manage GWN7670WM over cloud, please refer to gdms.cloud

- Do not attempt to open, disassemble, or modify the device.
- Do not expose this device to temperatures outside range of 0 °C to 45 °C for operating and -30 °C to 60 °C for storage.
- Do not expose the GWN7670WM to environments outside of the following humidity range: 10-90% RH (non-condensing).
- Do not power cycle your GWN7670WM during system boot-up or firmware upgrade. You may corrupt firmware images and cause the unit to malfunction.

The GNU GPL license terms are incorporated into the device firmware and can be accessed via the Web user interface of the device at my_device_ip/gpl_license. It can also be accessed here: <http://www.grandstream.com/legal/open-source-software>
To obtain a CD with GPL source code information please submit a written request to info@grandstream.com

Refer to online documents and FAQ for more detailed information:

www.grandstream.com/our-products